



C.O.W.S stands for: Community of Welfare Students.

sharing will be of assistance in achieving this goal.

continue the journey in the profession of our choice.

C.O.W.S Community Of Welfare Students is a **facebook** page, we have created as an Online Peer Support Group.

HOW WILL THIS WORK

We will be emailing invitations to previous and present students of the Diploma of Community Welfare and related courses, inviting them to join our **facebook** page. We will ask other students in the Community Welfare / Human Services area to email their friends also, including current and former students in remote areas of Australia and even internationally. We would like to hear stories on how students have travelled in this field of work, and hope we can guide each other as we

We hope that new students of Community Welfare / Human Services will continue with our **facebook** page to help others in the future.

We are inviting any students who have, are or will be studying Community Welfare / Human Services to join our online community. We would like to be recognised as a community network; where individuals especially students in remote areas can share and inspire other students on their journey. We want to give the best service possible in the Community Welfare / Human Services field and we hope this

The beauty of our **facebook** page is that it is a cost efficient way to keep in touch with other students from all over Australia and the world, all you will need is an email address.

We will be able to measure our success by how many hits we have on our **facebook** page. You too can keep your eye on this as it will be on the site for everyone to see.

THE HERD

Alex



Andrea



Bron



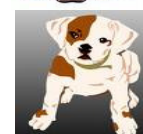
Jennie



Liz

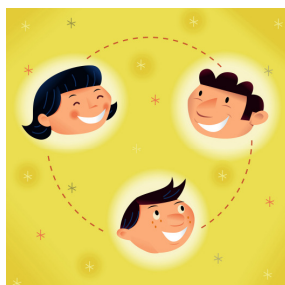


Vanessa



Calling All Learner Friends

TWITTER is a new and innovated way of networking socially. It is a free micro-blogging service that allows users to send "updates" (SMS, instant messaging, email, to the Twitter website where your friends or groups can see.



Twitter allows you to post your twitter blogs for free via GPS without having to bear the SMS cost of the conventional method. To find out more about Twitter log onto

<http://www.twitter.com>

Keeping In touch

- ♦ *Bringing together students and workers*
- ♦ *Including students and workers from remote and rural areas all around Australia and even the world*
- ♦ *Enthuse and delight each other with inspiring stories in the community welfare and human services field*
- ♦ *Become a voice that can be heard by everyone*

COMMUNITY

A group of people who live in the same area, or the area in which they live.

People with a common background or with shared interests within society.

A group of nations with a common history or common economic or political interests.



HISTORY

While working on a class project on networking, Tammy raised the idea of using **facebook** which could be available to past present and future students of community welfare/human services. Meanwhile, some students had been tossing around the idea of a support service that connected rural people with city services; by combining the ideas we came up with C.O.W.S Community Of Welfare Students a way of connecting isolated and rural students with city students. A **facebook** page is cost effective, easily accessed and far reaching, it's a two way bridge that enables fast efficient exchanges of information and ideas and gives support when we have those moments of doubt or just can't think. It can give insight into issues that are unique to each students community. The name C.O.W.S Community Of Welfare Students was suggested by B.J another class member; just goes to show what team-work can do!

General Information

The Australian Institute of Welfare and Community Workers Inc. (AIWCW) is the recognised professional body for welfare and community workers in Australia and was founded in 1969. It represents at a national and state level the interests of welfare and community workers employed within government departments, non-government social welfare agencies, self help groups, commercial and industrial enterprises.

The institute is a means by which welfare and community workers can come together through national and branch meetings, enabling them to share and benefit from their combined knowledge and experience.

AIWCW has played a major role in the establishment of formalised training for welfare and community workers and is generally recognised as the body for registration and accreditation of courses designed to meet the training needs of the welfare and community worker profession.